

**Anti-MART-1 / Melan-A / MLANA Antibody**  
**Mouse Monoclonal Antibody**  
**Catalog # AH13228****Specification**

---

**Anti-MART-1 / Melan-A / MLANA Antibody - Product Information**

Application	WB, IHC-P, IF, FC
Primary Accession	<a href="#">Q16655</a>
Other Accession	<a href="#">154069</a>
Reactivity	Human, Rat, Horse
Host	Mouse
Clonality	Monoclonal
Isotype	Mouse / IgG2b, kappa
Calculated MW	13157

**Anti-MART-1 / Melan-A / MLANA Antibody - Additional Information****Gene ID** 2315**Other Names**

Antigen LB39-AA, Antigen SK29-AA, Melanoma antigen recognized by T-cells 1, MLAN-A, MLANA

**Application Note**

WB~~1:1000  
IHC-P~~N/A  
IF~~1:50~200  
FC~~1:10~50

**Format**

200ug/ml of Ab purified from Bioreactor Concentrate by Protein A/G. Prepared in 10mM PBS with 0.05% BSA &amp; 0.05% azide. Also available WITHOUT BSA &amp; azide at 1.0mg/ml.

**Storage**

Store at 2 to 8°C. Antibody is stable for 24 months.

**Precautions**

Anti-MART-1 / Melan-A / MLANA Antibody is for research use only and not for use in diagnostic or therapeutic procedures.

**Anti-MART-1 / Melan-A / MLANA Antibody - Protein Information****Name** MLANA**Synonyms** MART1**Function**

Involved in melanosome biogenesis by ensuring the stability of GPR143. Plays a vital role in the expression, stability, trafficking, and processing of melanocyte protein PMEL, which is critical to the formation of stage II melanosomes.

**Cellular Location**

Endoplasmic reticulum membrane; Single-pass type III membrane protein. Golgi apparatus. Golgi apparatus, trans-Golgi network membrane. Melanosome. Note=Also found in small vesicles and tubules dispersed over the entire cytoplasm. A small fraction of the protein is inserted into the membrane in an inverted orientation Inversion of membrane topology results in the relocalization of the protein from a predominant Golgi/post-Golgi area to the endoplasmic reticulum. Melanoma cells expressing the protein with an inverted membrane topology are more effectively recognized by specific cytolytic T-lymphocytes than those expressing the protein in its native membrane orientation

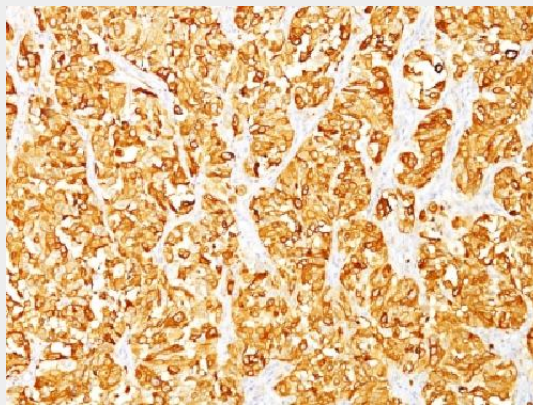
**Tissue Location**

Expression is restricted to melanoma and melanocyte cell lines and retina

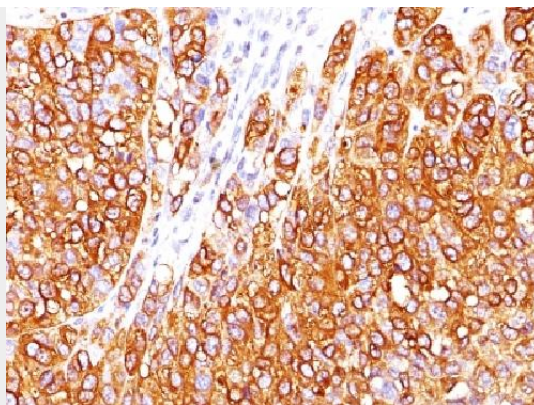
**Anti-MART-1 / Melan-A / MLANA Antibody - Protocols**

Provided below are standard protocols that you may find useful for product applications.

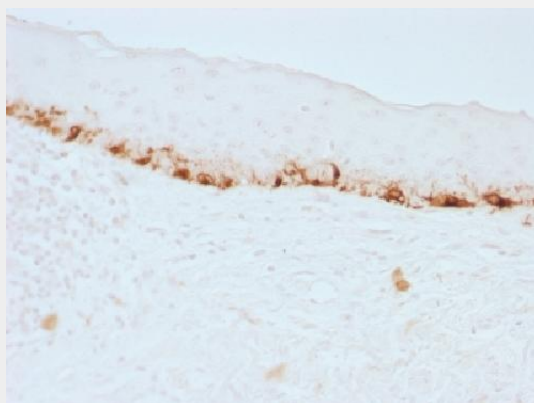
- [Western Blot](#)
- [Blocking Peptides](#)
- [Dot Blot](#)
- [Immunohistochemistry](#)
- [Immunofluorescence](#)
- [Immunoprecipitation](#)
- [Flow Cytometry](#)
- [Cell Culture](#)

**Anti-MART-1 / Melan-A / MLANA Antibody - Images**

Formalin-fixed, paraffin-embedded human Melanoma stained with MART-1 Monoclonal Antibody (M2-7C10).



Formalin-fixed, paraffin-embedded human Melanoma stained with MART-1 Monoclonal Antibody (M2-7C10).



Formalin-fixed, paraffin-embedded human Skin stained with MART-1 Monoclonal Antibody (M2-7C10).

#### **Anti-MART-1 / Melan-A / MLANA Antibody - Background**

This antibody recognizes a protein doublet of 20-22kDa, identified as MART-1 (Melanoma Antigen Recognized by T cells 1) or Melan-A. MART-1 is a newly identified melanocyte differentiation antigen recognized by autologous cytotoxic T lymphocytes. Seven other melanoma associated antigens recognized by autologous cytotoxic T cells include MAGE-1, MAGE-3, tyrosinase, gp100, gp75, BAGE-1, and GAGE-1. Subcellular fractionation shows that MART-1 is present in melanosomes and endoplasmic reticulum. This MAb labels melanomas and other tumors showing melanocytic differentiation. It is also a useful positive-marker for angiomyolipomas. It does not stain tumor cells of epithelial, lymphoid, glial, or mesenchymal origin.